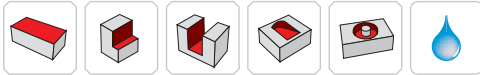
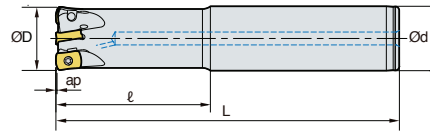


HFMD S-LN06 new



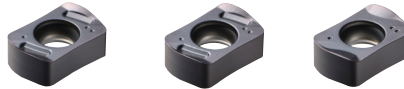
• AR: -9°
• RR: 10°~15°

(mm)

Designation		ØD	Ød	ℓ	L	ap	
HFMD S 016R-2C16-100-LN06	2	16	16	30	100	0.7	0.13
016R-2C16-150-LN06	2	16	16	50	150	0.7	0.19
017R-2C16-100-LN06	2	17	16	30	100	1.0	0.13
017R-2C16-150-LN06	2	17	16	40	150	1.0	0.20
017R-2C16-200-LN06	2	17	16	40	200	1.0	0.27
018R-2C16-100-LN06	2	18	16	40	100	1.0	0.14
018R-2C16-160-LN06	2	18	16	40	160	1.0	0.18
018R-2C16-200-LN06	2	18	16	40	200	1.0	0.28
019R-2C16-100-LN06	2	19	16	40	100	1.0	0.15
019R-2C16-160-LN06	2	19	16	40	160	1.0	0.19
019R-2C16-200-LN06	2	19	16	40	200	1.0	0.29
020R-3C20-100-LN06	3	20	20	40	100	1.0	0.20
020R-3C20-130-LN06	3	20	20	50	130	1.0	0.26
020R-3C20-160-LN06	3	20	20	80	160	1.0	0.31
020R-3C20-200-LN06	3	20	20	120	200	1.0	0.40

Available inserts

LNX-ML LNX-MF LNX-MM



Designation	Coated				page
	PC2510	PC3700	PC5300	PC5400	
LNX 060310R-ML			●	●	E11
060310R-MF	●	●	●	●	
060310R-MM	●	●	●	●	

Parts

Specification		
Ø16~Ø40	FTNA0306	TW09S

Available inserts E11

